

SANDDY DIAMOND TOOLS



THE CHOICE OF PROFESSIONAL

Grinding and Polishing



Best Quality , Best Service



Quanzhou Sanddy Diamond Tools Co.,ltd. was established in 1998, was located in shuitou- china famous stone market, We are the company who is specialized in the research, production and sales of diamond tools with innovation as well as powerful technical force . Our main products are diamond segment, diamond blade, diamond polishing pads, diamond cutter, polishing tools for the stone, conected and asphat.

We welcome any questions and inquiries you have, if you do not see what you need in our catalogue or website, please contact us at daniel@sanddytool.com, we can help you.

Contact us: Daniel
Email: daniel@sanddytool.com
Moblle: 0086-15959574493
Tel: 0086-595-85836635
Website: www.sanddytool.com



Contents

Calibrating& Profiling wheel	4
Concrete grinding wheel	5-6
Granite grinding cup wheel	7-8
Granite abrasive disc	9
Granite Fickert	10
Concrete floor grinding brick	11
Granite&Marble polishing pad	12-13
Concrete floor polishing pad	14-15
Grinding brush	16
Bush hamer	17

Description:

Using for the natural stone, it must be processed from molding, finishing to polishing and some other procedures, and will be decorative.

Diamond Calibrating Wheel

Dia (mm)	Thickness (mm)	Bore (mm)	Segment
300	25	30	Straight segment
	30		
350	35	50	Oblique segment
	40		



Diamond Profile Wheel

Dia (mm)	Thickness (mm)	Bore (mm)	Shape Type
100			Eased
			Long Nose Demi Bevel
150	2cm		Chamfer
			Long Nose Ogee
250	3cm	30	Ogee
	4cm	50	Double Cove
300	5cm		Straight
			Cove
350			Double Eased
			Quirk
			Full Bull Nose



Description:

Concrete grinding wheels are available in a single row wheel, double row wheel and turbo wheel. Ideal for surface preparation, edge blending, smooth shaping, finishing, deburring and till wall finishing of masonry surface.



Arrow Turbo Diamond Wheel for concrete

Dia (mm)	Segment Height (mm)	Arbor	Grit	Segment No
100				3
115			30# 40#	4
125		22. 23mm	50# 60#	5
150	10	5/8"-11	70# 80#	5
180		M14	100#	6
200			120#	8
230				10

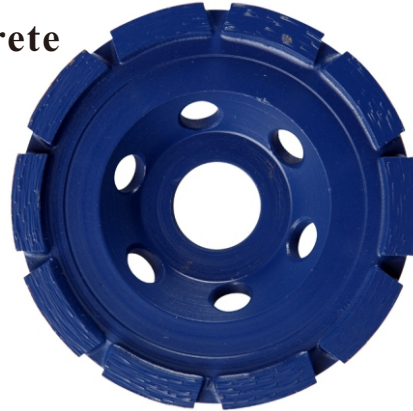


Double Row Diamond Cup Wheel For Concrete

Dia (mm)	Segment Size (mm)	Arbor	Grit	Segment No
100	30x7. 2x5. 7		30#	14
115	38x7. 2x5. 7		40#	14
125	38x7. 2x5. 7	22. 23mm	50#	14
150	27x7x6	5/8"-11	60#	14
180	35x7x6	M14	70#	24
200	35x7x6		80#	26
230	36x7. 5x5. 7		100# 120#	28

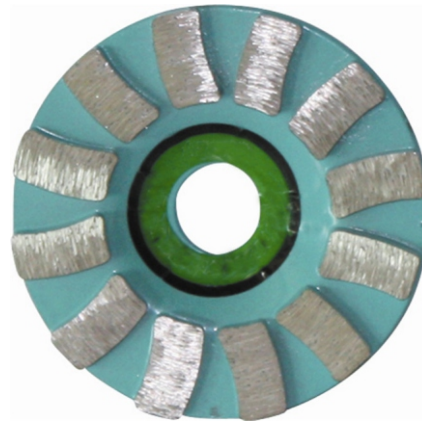
Single Row Diamond Cup Wheel For Concrete

Dia (mm)	Segment Size (mm)	Core	Segment No
100	5x30x7.2		8
110	5x31x7.2	22.23/ M14	8
125	5x30x7.2		9
180	5x35x7.2		12
230	5x32x7.2		14



Sun Type Diamond Wheel for Concrete

Dia (mm)	Segment Height (mm)	Arbor	Grit	Segment No
100				12
115			30# 40#	13
125		22.23mm	50# 60#	14
150	10	5/8"-11	70#	18
180		M14	80#	24
200			100#	22
230			120#	26



Swirling Turbo Type Diamond Wheel For Concrete

Dia (mm)	Segment Size (mm)	Arbor	Grit	Segment No
100				6
115				7
125		22.23mm	30# 40#	8
150	30x10x9	5/8"-11	50# 60#	9
180		M14	70# 80#	10
200			100# 120#	12
230				14



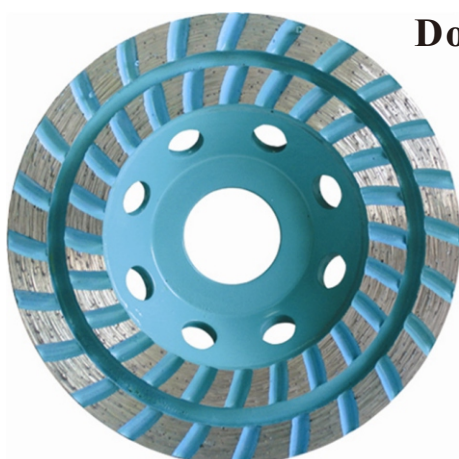
T Type Diamond Wheel for concrete

Dia (mm)	Segment Height (mm)	Arbor	Grit	Segment No
100				12
115			30# 40#	13
125		22.23mm	50# 60#	14
150	10	5/8"-11	70#	18
180		M14	80#	24
200			100#	22
230			120#	26



Description:

Diamond granite cup wheels are available in a single row wheel, double row wheel and turbo wheel. With feature venting holes for fast, rough, dry or water-cooling grinding with long wheel life.



Double Turbo Row Diamodn Cup Wheel For Granite

Dia (mm)	Segment Height (mm)	Grit	Arbor (mm)
100			
115			22. 23mm
125	5	30# 40# 50# 60# 70#	5/8"-11
150		80# 100# 120#	M14
180			



Resin Diamond Cup Wheel For Granite

Dia (mm)	Segment Height (mm)	Grit	Arbor (mm)
100			
115		30# 40# 50#	22. 23mm
125	5	60# 70# 80#	5/8"-11
150		100# 120#	M14
180			

Sintered Turbo Diamond Cup Wheel For Granite

Dia (mm)	Segment Height (mm)	Grit	Arbor (mm)
100	5	30# 40# 50# 60# 70# 80# 100# 120#	22.23mm 5/8"-11 M14
115			
125			
150			
180			



Iron Turbo Diamond Cup Wheel For Granite

Dia (mm)	Segment Height (mm)	Grit	Arbor (mm)
100	5	30# 40# 50# 60# 70# 80# 100# 120#	22.23mm 5/8"-11 M14
115			
125			
150			
180			



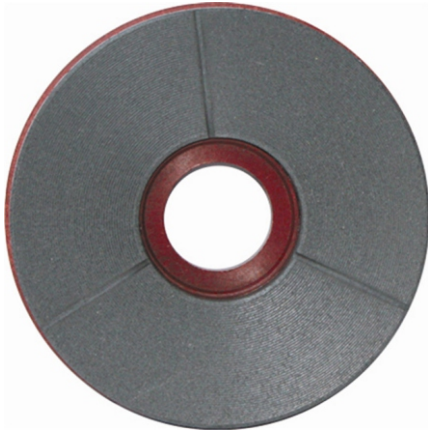
Aluminium Double Turbo Diamond Cup Wheel For Granite

Dia (mm)	Segment Height (mm)	Grit	Arbor (mm)
100	5	30# 40# 50# 60# 70# 80# 100# 120#	22.23mm 5/8"-11 M14
115			
125			
150			
180			



Description:

Diamond Grinding Disc is used for rough grinding, fine grinding and finish. With feature of fast, rough, water-cooling grinding with long wheel life. Ideal for surface polishing of granite.



Buff Diamond Abrasive Disc For Granite

Dia (mm)	Segment Size (L x W x H)	Grit
100		
150		
200	Black Buff# & White Buff#	
250		



Metal Bond Diamond Abrasive Disc For Granite

Dia (mm)	Segment Size (mm)	Grit	Segment No
100	25x7.2x10	50#	6
150	30x6x10	100#	4+8
200	30x6x10+40x7x10	200#	4+8
250	30x6x10+40x7x10	400#	4+8



Resin Bond Diamond Abrasive Disc For Granite

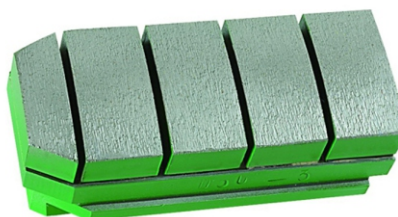
Dia (mm)	Segment Size (mm)	Grit	Segment No
100	40x20x20	500#	3
150	40x20x20	1000#	6
200	40x20x20	1500#	12
250	40x20x20	3000#	15

Description:

Diamond Fickert is used for rough grinding and fine polishing the slabs and porcelain tiles. Ideal for surface polishing of granite. It is applied on automatic stone polishing machine.

Metal Bond Segmented Granite Fickert

Length (mm)	Segment Hight (mm)	Grit
140	15 (20)	24/36/46/60/80/ 100/120/140/180/
170	15 (20)	240/320#



Resin Bond Diamond Granite Fickert

Length (mm)	Segment Hight (mm)	Grit
140	15 (20)	24/36/46/60/80/ 100/120/140/180/
170	15 (20)	240/320#



Sintered Metal Bond Diamodn Granite Fickert

Length (mm)	Segment Hight (mm)	Grit
140	15 (20)	24/36/46/60/80/ 100/120/140/180/
170	15 (20)	240/320#



Description:

Application for portable floor polishing machines to polish and shine concrete surface. Designed specifically for the floor restoration professional, with different shape.



Metal Bond Diamond Floor Grinding Disc

Dia (mm)	Grit	Segment No.	Segment Thickness
80	30#, 60#, 120#	10pcs	4mm
100	30#, 60#, 120#	10pcs	4mm



Trapezoid Diamond Grinding Plate

Segment size (mm)	Grit	Segment No.
40x7x10	6#, 16#, 25#, 30#, 40#, 50#, 60#, 80#, 100#, 120#, 150#, 170#, 200#	2



HTC Diamond Grinding Plate

Segment size (mm)	Grit	Segment No.
Dia:18 Height:12	6#, 16#, 25#, 30#, 40#, 50#, 60#, 80#, 100#, 120#, 150#, 170#, 200#	2

Description:

Installing with rubber backer, For polishing various curve surface of stone, using sequence: from rough grit to fine, finally 1 polishing, can work with 3 steps, 5 steps and 8 steps.

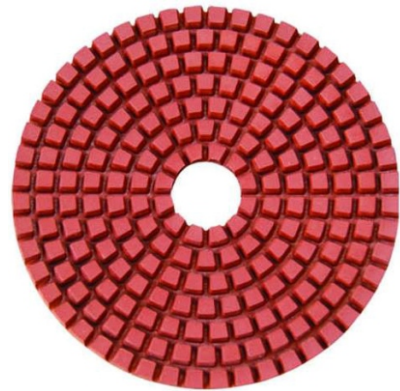
Hexagon Shape Diamond Dry Polishing Pads

Dia (mm)	Thickness (mm)	Grit	Bore (mm)
80	1.5 (2.0, 3.0)	50# 100# 200#	20/22.23
105	1.5 (2.0, 3.0)	400# 800# 1500#	20/22.23
125	1.5 (2.0, 3.0)	3000# buff#	20/22.23
150	1.5 (2.0, 3.0)	(white&black)	20/22.23



Fane Shape Diamond Wet Polishing Pads

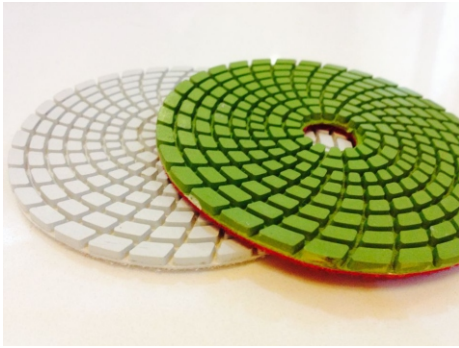
Dia (mm)	Thickness (mm)	Grit	Bore (mm)
80	1.5 (2.0, 3.0)	50# 100# 200#	20/22.23
105	1.5 (2.0, 3.0)	400# 800# 1500#	20/22.23
125	1.5 (2.0, 3.0)	3000# buff#	20/22.23
150	1.5 (2.0, 3.0)	(white&black)	20/22.23



Colorful Diamond Wet Polishing Pads

Dia (mm)	Thickness (mm)	Grit	Bore (mm)
80	1.5 (2.0, 3.0)	50# 100# 200#	20/22.23
105	1.5 (2.0, 3.0)	400# 800# 1500#	20/22.23
125	1.5 (2.0, 3.0)	3000# buff#	20/22.23
150	1.5 (2.0, 3.0)	(white&black)	20/22.23

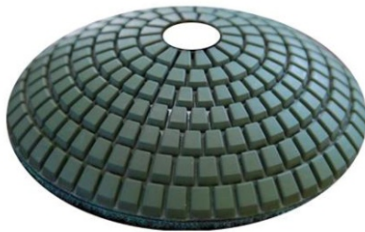




Hexagon Shape Diamond Dry Polishing Pads

Dia (mm)	Thickness (mm)	Grit	Bore (mm)
80	1.5 (2.0, 3.0)	50# 100# 200#	20/22.23
105	1.5 (2.0, 3.0)	400# 800# 1500#	20/22.23
125	1.5 (2.0, 3.0)	3000# buff#	20/22.23
150	1.5 (2.0, 3.0)	(white&black)	20/22.23

Convex diamond wet polishing pads



Dia (mm)	Thickness (mm)	Grit	Bore (mm)
80	1.5 (2.0, 3.0)	50# 100# 200#	20/22.23
105	1.5 (2.0, 3.0)	400# 800# 1500#	20/22.23
125	1.5 (2.0, 3.0)	3000# buff#	20/22.23
150	1.5 (2.0, 3.0)	(white&black)	20/22.23

Rubber Backer Of Polishing Pads



Dia (mm)	Arbor size (mm)	Holder Type
80	5/8'-11, M14	Velcro
100	5/8'-11, M14	Velcro
125	5/8'-11, M14	Velcro

Description:

Application for portable floor polishing machines to polish and shine concrete surface. Designed specifically for the floor restoration .

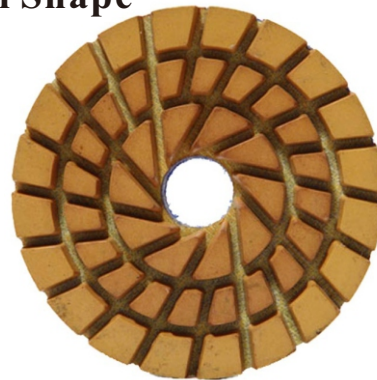
Diamond Concrete Floor Polishing Pas Sun Shape

Dia (mm)	Thickness (mm)	Grit
80	10	50#, 100#, 200#, 400#
100		800#, 1500#, 3000#



Diamond Concrete Floor Polishng Pads Spiral Shape

Dia (mm)	Thickness (mm)	Grit
80	10	50#, 100#, 200#, 400#
100		800#, 1500#, 3000#



Diamond Concrete Floor Polishng Pads Spiral Shape

Dia (mm)	Thickness (mm)	Grit
80	10	50#, 100#, 200#, 400#
100		800#, 1500#, 3000#



Diamond Concrete Floor Polishing Pas Sun Shape



Dia (mm)	Thickness (mm)	Grit
80	10	50#, 100#, 200#, 400#
100		800#, 1500#, 3000#

Diamond Concrete Floor Polishing Pas Sun Shape



Dia (mm)	Thickness (mm)	Grit
80	10	50#, 100#, 200#, 400#
100		800#, 1500#, 3000#

Diamond Concrete Floor Polishing Pas Sun Shape



Dia (mm)	Thickness (mm)	Grit
80	10	50#, 100#, 200#, 400#
100		800#, 1500#, 3000#

Description:

Using on granite, marble, artificial stone surface. For polishing elbow board, counter top, stair, marble, granite and concrete etc.

Diamond Concrete Floor Polishing Pas Sun Shape

Type	Grit	Arbor
Fickert		
Frankfurt	24#, 36#, 46#, 60#,	M14
Round D100mm	80#, 120#, 180#, 240#,	M16
Round D125mm	320#, 500#, 800#	5/8"-11
Round D200mm		Snail lock



Diamond Concrete Floor Polishing Pas Sun Shape

Type	Grit	Arbor
Fickert		
Frankfurt	24#, 36#, 46#, 60#,	M14
Round D100mm	80#, 120#, 180#, 240#,	M16
Round D125mm	320#, 500#, 800#	5/8"-11
Round D200mm		Snail lock



Description:

Used to process bush hammered finish in granite, marble and other stone surfaces.
The grit of bush hammered surface can be adjusted.



Diamond Bush Hamer

Dia (mm)	Roller No.	Segment No	Bore
125	3	30	
150	4	30	
200	6	30	M14
250	8	30	5/8"-11
300	10	30	42mm
150	3	45	47mm
200	4	45	50mm
250	5	45	
300	6	45	



Best Quality , Best Service

SANDDY DIAMOND TOOLS

Add: Kuifeng industrial zone , Shuitou Town , Quanzhou City , Fujian Province , China

Contact us: Daniel

Email: daniel@sanddytool.com

Moblle: 0086-15959574493

Tel: 0086-595-85836635

Website: www.sanddytool.com